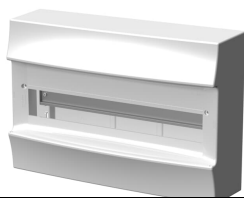




 PRODUCT-DETAILS

41P18X10

41P18X10 Consumer unit , Surface mounting, 18 modules, 1 row(s), IP30, Door: Without Door, Dimensions: 119.000 mm x 387.000 mm x 262.000 mm



General Information

Extended Product Type	41P18X10
Product ID	1SPE007717F0800
ABB Type Designation	Mistral41W
EAN	8712507119513
Catalog Description	41P18X10 Consumer unit , Surface mounting, 18 modules, 1 row(s), IP30, Door: Without Door, Dimensions: 119.000 mm x 387.000 mm x 262.000 mm
Long Description	Consumer unit, IP 41, 18 -modules without door

Technical

Power Loss	29.8 W
Number of Line Terminals	0
Number of Rows	1
Configuration Type	Assembled with DIN-rail
Cover Plate Type	None
Mounting Type	Surface mounting
Door Type	Without Door

Enclosure Material	Thermoplastic
Housing Material	Plastic
Transparent Door	No
Cover Style	with Notch
DIN Place Units	18
RAL Number	RAL 9016 - Traffic White
Color	White
Terminal Type	No Terminals

Material Compliance

RoHS Information	9AKK108468A2419
RoHS Status	Following EU Directive 2011/65/EU and Amendment 2015/863 July 22, 2019
RoHS Date	20221015
Conflict Minerals Reporting Template (CMRT)	9AKK108468A3363

Environmental

Ambient Temperature	Operation -10 ... +60 °C
Degree of Protection	IP30
Protection Class	Isolated (Class II)
Environmental Information	9AJK000330

Dimensions

Width in Number of Modular Spacings	18
Product Net Width	387.000 mm
Product Net Height	119.000 mm
Product Net Depth / Length	262.000 mm
Product Net Weight	1.068 kg

Ordering

Package Level 1 Units	box 3 piece
Package Level 1 Gross Weight	3.204 kg

Certificates and Declarations

Declaration of Conformity - CE	9AKK108468A2419
--------------------------------	-----------------

Installation

Instructions and Manuals	1SPC8010I5M0201
--------------------------	-----------------

Popular Downloads

Data Sheet, Technical Information	1SLC801013D0201
Building Information Modeling – BIM	9AKK107046A8396

Classifications

ETIM 8	EC000214 - Small distribution board
ETIM 9	EC000214 - Small distribution board
WEEE Category	Product Not in WEEE Scope
eClass	V11.0 : 27142409
Object Classification Code	Not applicable

Categories

Low Voltage Products and Systems → Enclosures → Consumer Units → Consumer Units → MISTRAL41W

