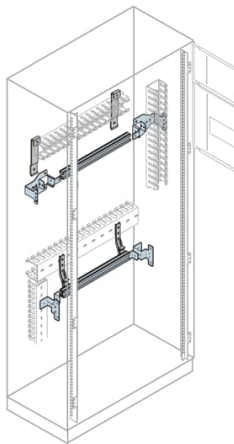




 PRODUCT-DETAILS

IS2-EH0036

IS2-EH0036 Control and Automation Board



General Information

Extended Product Type	IS2-EH0036
Product ID	EH0036
EAN	8015646697233
Catalog Description	IS2-EH0036 Control and Automation Board
Long Description	DIN rail and fixing supports (36 DIN mod.) W=800mm

Technical

Standards	See code for structure
Suitable For	AM2 Cabinets IS2 Enclosures for Automation
Suitable for Product Class	Control and Automation Board
Accessory Type	12. Modular apparatus
Mounting Type	Kit Pre assembled
Product Type	5B5B30B370
Surface Finishing	Orange Peel, RAL 7035

Door Surface Finishing	Opaque
Material	Pickled steel sheet
Options Provided	2. DIN rail Kit with front wiring duct
Remarks	ETIM
RAL Number	RAL 7035 - Light Grey

Material Compliance

RoHS Information	1STC860065
RoHS Date	20140108

Environmental

Environmental Information	1STC804013D0209
---------------------------	-----------------

Dimensions

Product Net Width	649.5 mm
Product Net Height	99 mm
Product Net Depth / Length	96 mm
Product Net Weight	0.8880 kg
Reference Depth/Length	300 mm 400 mm 500 mm 600 mm 800 mm 1000 mm
Reference Height	1400 mm 1600 mm 1800 mm 2000 mm 2200 mm
Reference Width	400 mm 600 mm 800 mm 1000 mm 1200 mm 1600 mm

Ordering

Package Level 1 Units	1 piece
Package Level 1 Gross Weight	0.968 kg

Certificates and Declarations

Declaration of Conformity - CE	1STC860113
--------------------------------	------------

Installation

Instructions and	1STM604121R0006
------------------	-----------------

Manuals

Popular Downloads

Data Sheet, Technical Information	1STC804013D0209
-----------------------------------	-----------------

Classifications

ETIM 8	EC000747 - Door/operating panel (enclosure/cabinet)
WEEE Category	5. Small Equipment (No External Dimension More Than 50 cm)
WEEE B2C / B2B	Business To Business
CN8	85381000
eClass	V11.1 : 27182204
Object Classification Code	U

Categories

Low Voltage Products and Systems → Enclosures → Automation and Control Enclosures (System pro E control) → Enclosures - Baying (Horizontal Joining) → IS2

