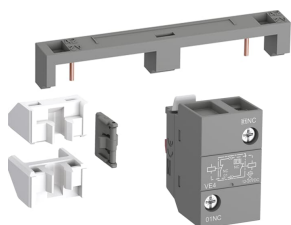




PRODUCT-DETAILS

VEM4

VEM4 Mechanical and Electrical Interlock Set



General Information	
Extended Product Type	VEM4
Product ID	1SBN030111R1000
EAN	3471523130616
Catalog Description	VEM4 Mechanical and Electrical Interlock Set
Long Description	<p>VEM4 is a mechanical and electrical interlock set for the interlocking side-by-side without additional width of two AF09 ... AF38 or AFC09 ... AFC38 contactors.</p> <p>VEM4 set includes a mechanical interlock unit VM4 with 2 fixing clips (BB4) and a VE4 electrical interlock block with A2-A2 connection.</p> <p>Fixing the electrical interlock block on the front of the contactors connects the 2 built-in N.C. interlocking contacts to the two coils saving up to 50% less wiring compared to conventional electrical interlocking.</p> <p>VE4 block must be used with A2-A2 connection to respect the electrical connection diagram.</p>

Ordering	
Minimum Order Quantity	1 piece
Customs Tariff Number	85389099

Popular Downloads

Instructions and Manuals	1SBC101028M6801
CAD Dimensional Drawing	2CDC001079B0201

Dimensions

Product Net Width	25 mm
Product Net Depth / Length	31.6 mm
Product Net Height	43 mm
Product Net Weight	0.035 kg

Technical

Number of Auxiliary Contacts NO	0
Number of Auxiliary Contacts NC	2
Standards	IEC/EN 60947-5-1, UL 60947-1, UL 60947-4-1, CSA C22.2 No. 60947-1-13, CSA C22.2 No. 60947-4-1
Conventional Free-air Thermal Current (I_{th})	acc. to IEC 60947-5-1, $\Theta = 40\text{ °C}$ 16 A
Maximum Electrical Switching Frequency	1200 cycles per hour
Rated Insulation Voltage (U_i)	acc. to IEC 60947-5-1 690 V
Rated Impulse Withstand Voltage (U_{imp})	6 kV
Mechanical Durability	5 million
Maximum Mechanical Switching Frequency	1800 cycles per hour
Connecting Capacity Auxiliary Circuit	Flexible with Ferrule 1/2x 0.75 ... 2.5 mm ² Flexible with Insulated Ferrule 2x 0.75 ... 1.5 mm ² Flexible with Insulated Ferrule 1x 0.75 ... 2.5 mm ² Rigid Solid 1/2x 1 ... 2.5 mm ² Rigid Stranded 1/2x 1 ... 2.5 mm ²
Wire Stripping Length	Auxiliary Circuit 10 mm
Degree of Protection	acc. to IEC 60529, IEC 60947-1, EN 60529 Auxiliary Terminals IP20
Terminal Type	Screw Terminals
Suitable For	AF09 AF09Z AF12 AF12Z AF16 AF16Z AF26 AF26Z AF30 AF30Z AF38 AF38Z AFC09 AFC12 AFC16 AFC26 AFC30 AFC38 AF09B AF09ZB AF12B AF12ZB AF16B AF16ZB AF26B AF26ZB AF30B AF30ZB AF38B

AF38ZB

Technical UL/CSA

Maximum Operating Voltage UL/CSA	Auxiliary Circuit 500 V AC/DC
Tightening Torque UL/CSA	Auxiliary Circuit 11 in-lb

Material Compliance

Conflict Minerals Reporting Template (CMRT)	9AKK108467A5658
REACH Declaration	2CMT2021-006202
RoHS Information	2CMT2021-006277
RoHS Status	Following EU Directive 2011/65/EU
WEEE B2C / B2B	Business To Business
WEEE Category	5. Small Equipment (No External Dimension More Than 50 cm)

Certificates and Declarations

ABS Certificate	ABS_20-2060694-PDA
CB Certificate	CB_SE-112440
CQC Certificate	CQC2013010304651497
Declaration of Conformity - CCC	2020980304001259
Declaration of Conformity - CE	1SBD250007U1000
Declaration of Conformity - UKCA	1SBD250038U1000
GOST Certificate	GOST_POCCFR.ME77.B07175.pdf
RINA Certificate	RINA_ELE084013XG
UL Certificate	UL-US-2017443-2 UL-CA-2013922-2
UL Listing Card	UL E312527

Container Information

Package Level 1 Units	box 1 piece
Package Level 1 Width	92 mm
Package Level 1 Depth / Length	35 mm
Package Level 1 Height	46 mm
Package Level 1 Gross Weight	0.035 kg
Package Level 1 EAN	3471523130616
Package Level 2 Units	box 132 piece
Package Level 2 Gross Weight	4.62 kg
Package Level 3 Units	3168 piece

Classifications

ETIM 4	EC002498 - Accessories for low-voltage switch technology
ETIM 5	EC002498 - Accessories for low-voltage switch technology
ETIM 6	EC001044 - Mechanic interlock for switch
ETIM 7	EC001044 - Mechanic interlock for switch

ETIM 8	EC001044 - Mechanic interlock for switch
eClass	V11.0 : 27371303
UNSPSC	39122221
IDEA Granular Category Code (IGCC)	5219 >> Switch part or accessory
E-Number (Finland)	3706551
E-Number (Sweden)	3210004

Categories

Low Voltage Products and Systems → Control Products → Contactors → Block Contactors

