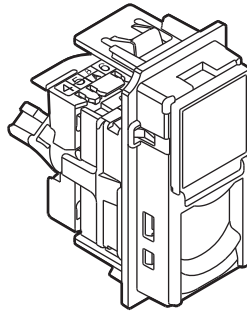


Cat. 5e RJ45 sockets



1. USE

Category 5e RJ 45 socket for high speed transmission (Gigabit Ethernet).
To be equipped with frame and plates.
Fixing with clips.

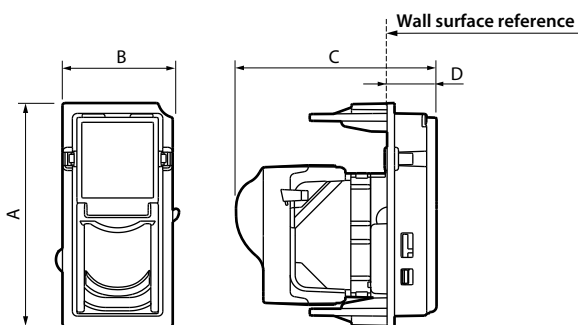
2. RANGE

| Category | Cat. Nos. | Related Cover Codes |
|----------|-------------------------------------|---|
| 5e UTP | KW4279C5E KM4279C5E KG4279C5E | <input type="checkbox"/> KW07 <input type="checkbox"/> KM07 <input type="checkbox"/> KG07 |

Colour code:

- White
- Sand
- Black

3. OVERALL DIMENSIONS (mm)

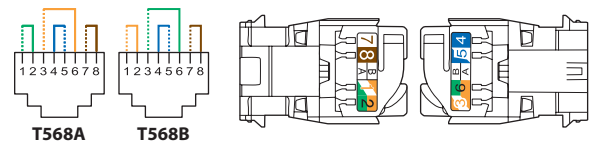


| A | B | C | D |
|----|----|----|----|
| 45 | 22 | 41 | 10 |

4. CONNECTION

Accepts the following cable connectors:
RJ 11 (4 contacts), RJ 12 (6 contacts), RJ 45 (9 contacts).

Double colour T568A and T568B on terminals:
UTP 8 contacts
FTP 9 contacts

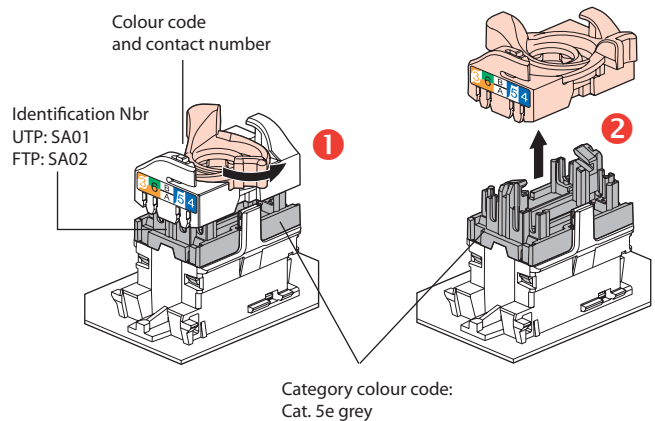


Conductors supported:

Solid/stranded: 0.4 to 0.65 mm, AWG 22 to 26.

Polyethylene conductor insulation: max. Ø 0.85 to 1.7 mm on insulation.

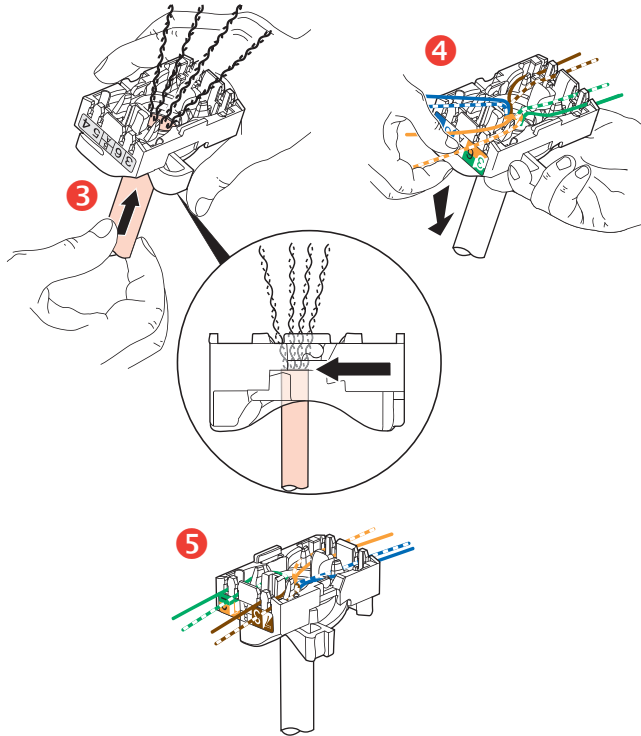
RJ 45 connectors are equipped with a locking nut that does not require the use of a specific tool and which enables re-wiring in the event of error.



Cat. 5e RJ45 sockets

4. CONNECTION (continued)

This system allows you to spread pairs before fitting them onto the connector.



Spreading the cables ensures that a pair-breakage distance of 13 mm is kept between each pair.

Spreading pairs at 90° to the cable ensures the best possible performance.

5. TECHNICAL CHARACTERISTICS**■ 5.1 Mechanical characteristics**

Impact resistance: IK 03

Penetration against solid bodies and liquids: IP 20

Max. number of connections and disconnections: 5 without refreshing the wiring.

Endurance: 2500 movements (plug insertion/withdrawal).

■ 5.2 Material characteristics

Contacts: gold/nickel, thickness of gold > 0.8 µm minimum

Metal parts: bronze, nickel, platinum, gold

Polycarbonate PBT

Material: ABS for cover plates

Colour: White - Tech - Anthracite

Halogen-free

UV-resistant

Self-extinguishing:

85°C/30 s for insulating components holding live parts in place

65°C/30 s for other insulating components

■ 5.3 Electrical characteristics

Breakdown voltage ≥ 1000 V

Contact resistance ≤ 20 MΩ

Insulation resistance ≥ 500 MΩ at 100 VDC

Tested and independently certified to comply with IEC 60512-99-001 and IEC 60512-99-002 for PoE support up to 90 W (Type 4).

■ 5.4 Climate characteristics

Storage temperature: - 10°C to + 70°C

Usage temperature: - 10°C to + 60°C

6. MAINTENANCE

Clean the surface with a cloth.

Do not use: acetone, tar-removing cleaning agents or trichloroethylene.

Caution: Always test before using other special cleaning products

7. STANDARDS AND APPROVALS

Connectors are compliant to requirements for the following remote powering applications IEEE 802.3af, IEEE 802.3at, IEEE 802.3bt: "Power over Ethernet", Types 1 to 4, up to 90 W.

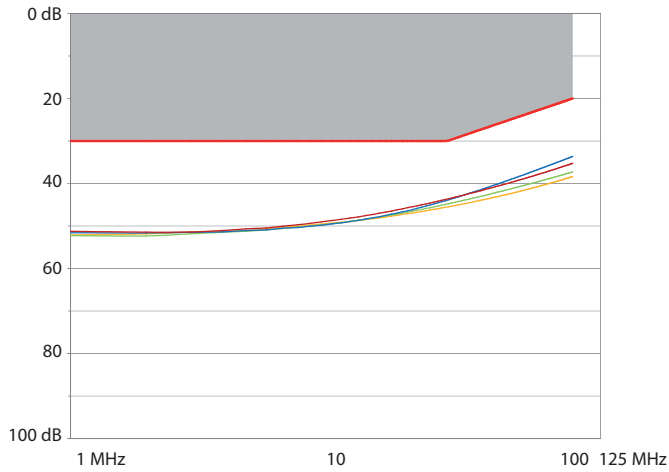
Comply with installation and production standards.

See e-catalogue.

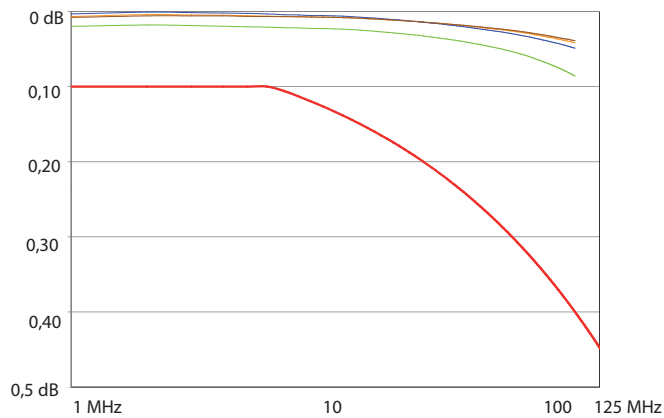
Cat. 5e RJ45 sockets

8. PERFORMANCE

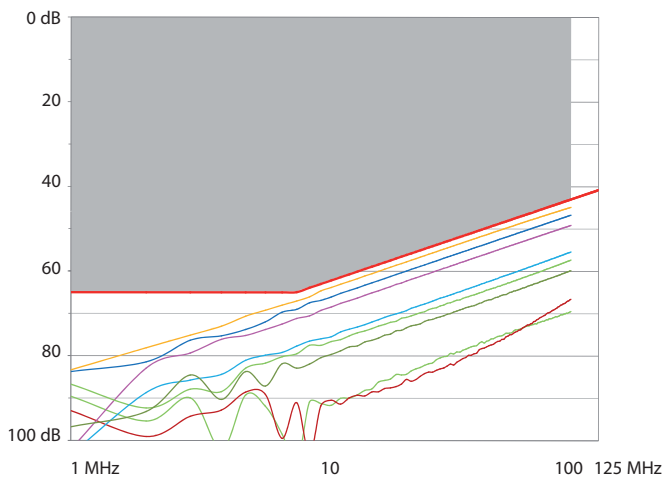
■ 8.1 Performance of components (RJ 45 connectors)
Return loss



Attenuation

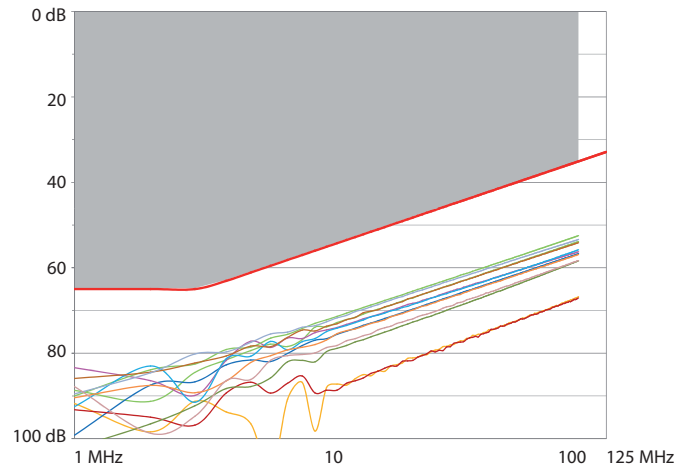


NEXT (Near end Crosstalk Attenuation)

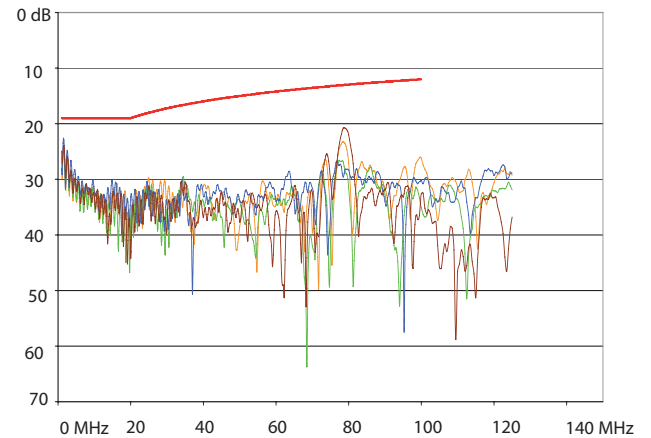


8. PERFORMANCE

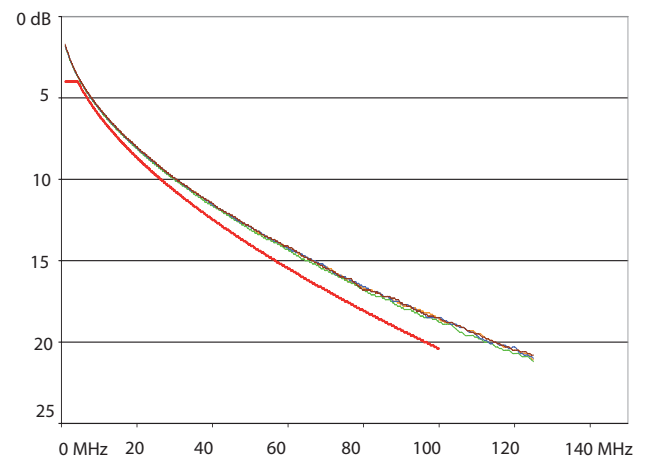
■ 8.1 Performance of components (RJ 45 connectors) (continued)
FEXT (Far end Crosstalk Attenuation)



■ 8.2 Performance of permanent link with F/UTP cable
Return loss



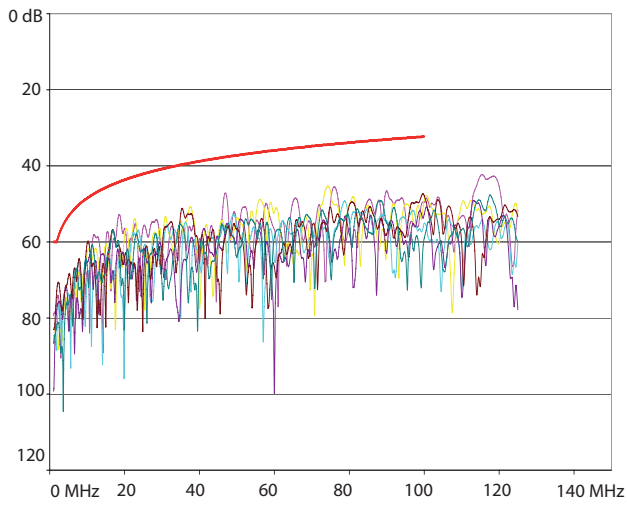
Attenuation



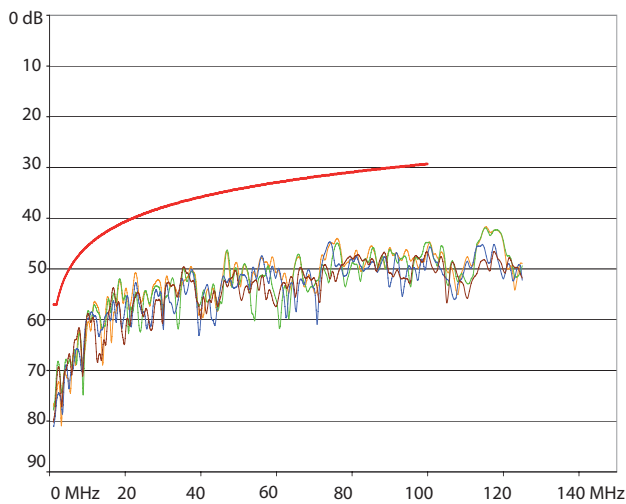
Cat. 5e RJ45 sockets

8. PERFORMANCE (continued)

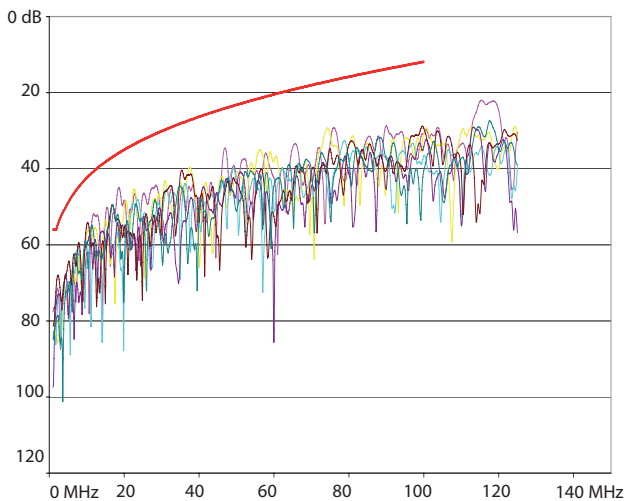
■ 8.2 Performance of permanent link with F/UTP cable (continued)
NEXT (Near end Crosstalk Attenuation)



PS NEXT (Power Sum NEXT)



ACR (Attenuation to Crosstalk Ratio) (Ecart paradiaphonique)



8. PERFORMANCE (continued)

■ 8.2 Performance of permanent link with F/UTP cable (continued)
ELFEXT (Equal Level End Crosstalk Attenuation)

