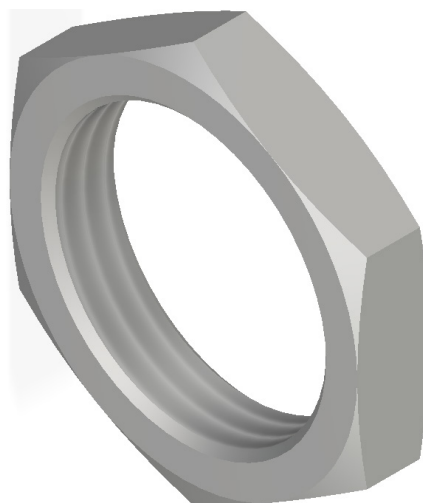
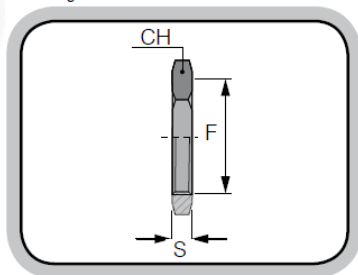


Ghiera

Locknut



disegno dimensionale / reference details



Settori di Impiego / Areas of application



DESCRIZIONE / DESCRIPTION

Ghiere di bloccaggio in ottone nichelato. Disponibili in filettature GAS ISO 228 - PG DIN 40430 - ISO METRICO R68.

Nickel-plated brass locknuts. Available with GAS ISO 228 - PG DIN 40430 - ISO METRICO R68 threads.

DATI TECNICI / TECHNICAL DATA

Materiale / Material	Ottone nichelato / Nickel-plated brass
Filettature / Threads	GAS ISO 228 - PG DIN 40430 - ISO R68

Codice Code	Filetto Thread GAS ISO 228	Codice Code	Filetto Thread PG DIN 40430	Codice Code	Filetto Thread ISO R68	Esagono Hexagon mm	Spessore Thickness mm	Confezione Package
60301	1/4"	60311	7	60330	12*1,5	15	4,0	100
60302	3/8"	60312	9	60321	16*1,5	20	4,0	100
-	-	60313	11	-	-	20	4,0	100
60303	1/2"	60314	13,5	60322	20*1,5	24	4,0	100
-	-	60315	16	-	-	24	4,0	100
60304	3/4"	60316	21	60323	25*1,5	30	5,0	50
60305	1"	-	-	60324	32*1,5	35	5,0	50
-	-	60317	29	-	-	40	5,0	50
60306	1" 1/4	-	-	60325	40*1,5	45	5,0	25
60307	1" 1/2	60318	36	-	-	52	5,0	25
-	-	60319	42	60326	50*1,5	60	6,0	25
60308	2"	60320	48	60327	63*1,5	68	6,5	10