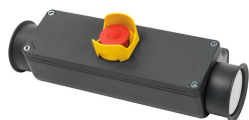


Data sheet

060CL2MA

Pulsantiera ergonomica a due mani grigia, alluminio



Features

Range	060 Dispositivi di Comando di Sicurezza
Product	Dispositivi di comando a due mani
Type	Pulsantiera ergonomica a due mani in alluminio
Item code	060CL2MA
Description	Pulsantiera ergonomica a due mani grigia, alluminio
Colour	Grigio RAL7016
Weight - gr	1461,000
Custom tariff no.	85371098
GTIN	8052878050887

Technical data

Approvals	CE
Compliance with standards	IEC-ENC60947-1, IEC-EN60947-5-1
Compliance with standards	IEC-EN60204-1, UNI EN ISO 13849-1, UNI EN ISO 13851
Operating temperatures	-40° ÷ +70° C
Protection degree	IP66 - IP69K (IEC-EN60529 - DIN40050)
Protection against impact	IK10 (IEC-EN62262)
Manufacturing process	Shell gravity diecasting
Enclosure material	Aluminum Al Si11 Cu2 (EN AC46100)
Screw material	Stainless steel AISI 304
Painting (where available)	Polyester powder coating
Wrist support material	Stainless steel AISI 304
Black base material	Steel
Operators plate material	Anodized aluminum
Rated insulation voltage	Ui 690V - Uimp 4kV (IEC-EN60947-1)
Overtoltage category	Class I (IEC-EN61140)
Pushbutton characteristics	See the single items 020PTAASRK-020PTF9MGR-020GE11
Safety accessory	060MCP2M - 2 hand simultaneous action controller
Accessory	Plug 020TTPGR, sealing screws 060VCE
Warranty period	18 months

Data sheet

060CL2MA

Pulsantiera ergonomica a due mani grigia, alluminio

Technical drawings

