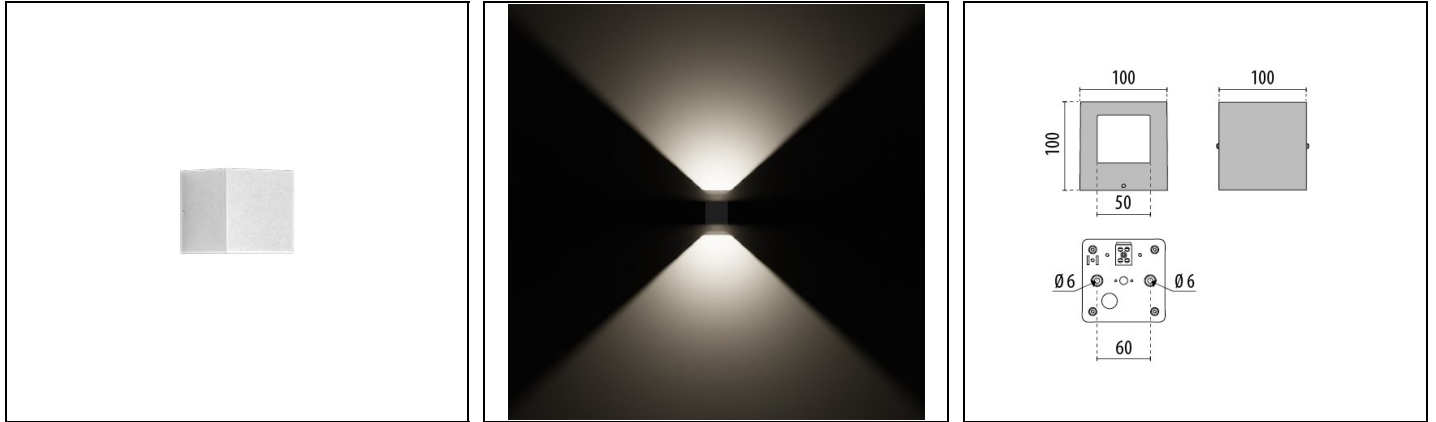


# QUASAR 10 2WB

Part number 303452



## Description

Wall-mounted LED luminaire, comprising:

- Die-cast aluminium housing, polyester powder coat finish ISO 9227/12944 - ISO 9223 (C5)
- Secured diffuser in printed transparent flat glass
- Foam polymer sealing gasket
- Stainless steel locking hardware
- Built-in driver
- Openable and maintainable luminaire (future-proof)

To maintain the regular updating of our products, PERFORMANCE iN LIGHTING reserves the right to make changes without prior notice. For the most up to date information we always recommend you read the latest version published on the website [www.performanceinlighting.com](http://www.performanceinlighting.com). Delivered luminaire lumen outputs and power consumptions, including losses, are subject to a tolerance of +/- 7%, and unless otherwise stated the values apply to an ambient temperature of 25°C. Terms of warranty are available at <https://www.performanceinlighting.com/qr/company/led-warranty>

## Product data

ETIM Group:	EG000027	ETIM Class:	EC0028g2
-------------	----------	-------------	----------

## General information

Lampholder:	LED	Light source:	LED
Lightsource lumen output [lm]:	300	Luminaire lumen output [lm]:	192
Luminaire wattage [W]:	6 W	Luminous efficacy [lm/W]:	32
CRI:	80	Colour temperature [K]:	3000
Colour / Finishing:	WH-87 / White / Textured	IP degree of protection:	IP44
IK-J-xxIP:	IK02 0.2J xx0	Protection class:	I
Optic:	R - Surface effects	Net weight [kg]:	1.01
Overall length [mm]:	100	Overall width [mm]:	100
Overall height [mm]:	100		

## Mechanical features

Shape:	Square $\leq$ 150 mm	Housing material:	Aluminium
Diffuser material:	Glass		

## Electrical features

Voltage type:	AC	Input voltage [V AC]:	220/240
Input frequency [Hz]:	50/60	Power factor / COS $\Phi$ :	>0.9
Inrush current [A/ $\mu$ s]:	27 / 250	C10 1.5 mm <sup>2</sup> :	28
C16 2.5 mm <sup>2</sup> :	45	B10 1.5 mm <sup>2</sup> :	17
B16 2.5 mm <sup>2</sup> :	27		

## Installation

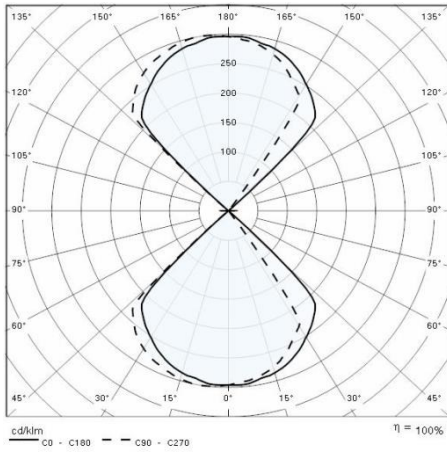
Application area:	Outdoor	Mounting type:	Wall surface
Min. ambient temperature [°C]:	-10	Max. ambient temperature [°C]:	30

## Light features

MacAdam:	3	Lumen maintenance:	L80B10@50000h
Distribution of light emission:	Direct/Indirect		

## Photometric data

---



To maintain the regular updating of our products, PERFORMANCE iN LIGHTING reserves the right to make changes without prior notice. For the most up to date information we always recommend you read the latest version published on the website [www.performanceinlighting.com](http://www.performanceinlighting.com). Delivered luminaire lumen outputs and power consumptions, including losses, are subject to a tolerance of +/- 7%, and unless otherwise stated the values apply to an ambient temperature of 25°C. Terms of warranty are available at <https://www.performanceinlighting.com/qr/company/led-warranty>