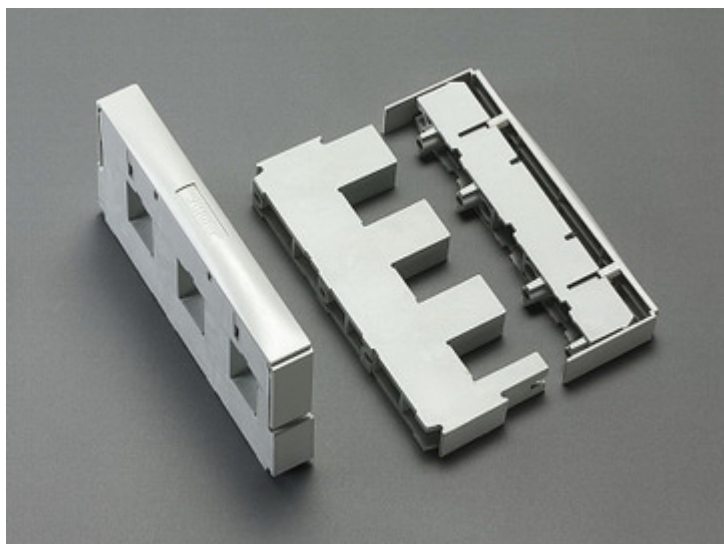


Supporto per barre (01231)



Descrizione

Articolo

Cod.art.: 01231

Supporto per barre

3p, fori di fissaggio interni

per barre con profilo TT

per barre con profilo doppia T

Montaggio

60Classic

Gruppo di prodotti 06

Sottogruppo merceologico 09

Pz / conf. 3

EAN 4021267012311

Vantaggi prodotto

Suitable as outer and centre supports
with internal screw holes.

Catalog page 2018 : 3.2

eCl@ss 6.1 27400607

27400607

ETIM 4.0 EC001166

ETIM 5.0 EC001166

Certificazioni

Norme

IEC 61439-1:2011

Omologazioni

CSA , UL , Germanischer Lloyd



for UL feeder circuits >250V

Type No.: S630-L

UL file: E123577, UL category (for USA): NMTR <http://www.ul.com>

UL file: E123577, UL category (for Canada): NMTR7 <http://www.ul.com>

CSA file: 110285, CSA class: 3211-37 <http://directories.csa-international.org>

Omologazione CCC : no certification required

Dati prodotto

Valori elettrici

Tensione nominale (IEC) AC: 690
V

Rated voltage (UL) AC: 600
V

Power dissipation:

The power dissipation at a typical load of 80% of the rated current results to 0 W.
(The power dissipation for operation with rated current would be 0 W.)

Tensione di picco Uimp: 8 kV

Tensione max. IEC AC: 1000
V

Tensione max. IEC DC: 1500
V

short-circuit capacity IEC / EN :

I_{pk} max. = 91 kA (busbar TT 720mm², 2 busbar supports in 500 mm distance)
go to calculation for [3-pole system \(IEC\)](#)

short-circuit capacity UL :

SCCR = 30 kA (busbar TT 720mm², 2 busbar supports in 400 mm distance)

increased short-circuit capacity UL by [protective devices](#)

Valori meccanici

L x H x P: 25 x 200 x 123

Peso: 59.1 kg/100

Poli: 3 poli

per barre: con profilo doppia
T

Proprietà materiali

Corpo temperature stability 125°C,

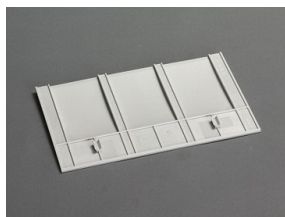
base: self-extinguishing in acc. to UL 94,
creepage resistance CTI 600,
halogen-free

Viti: screw +/- (PZ2), galvanized, chromized

Avvisi e consigli

Torque for the screws of the busbar support Md = 4Nm

Accessori



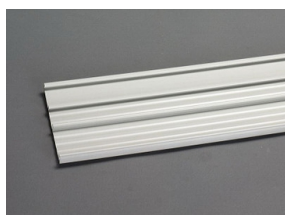
01234
Copertura laterale
per supporti 01231 e 01232



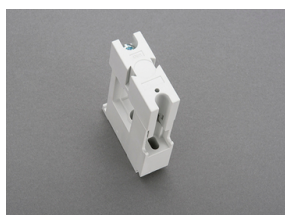
01236
Profilo di protezione
prof. 48 mm, lungh. 2,40 m



01237
Profilo di protezione
prof. 76 mm, lungh. 2,40 m



01238
Profilo di protezione
prof. 106 mm, lungh. 2,40 m
2400 x 106



01116
Supporto per barre
1p, per montaggio con supporto 01231 opp. singolarmente
barre con profilo TT