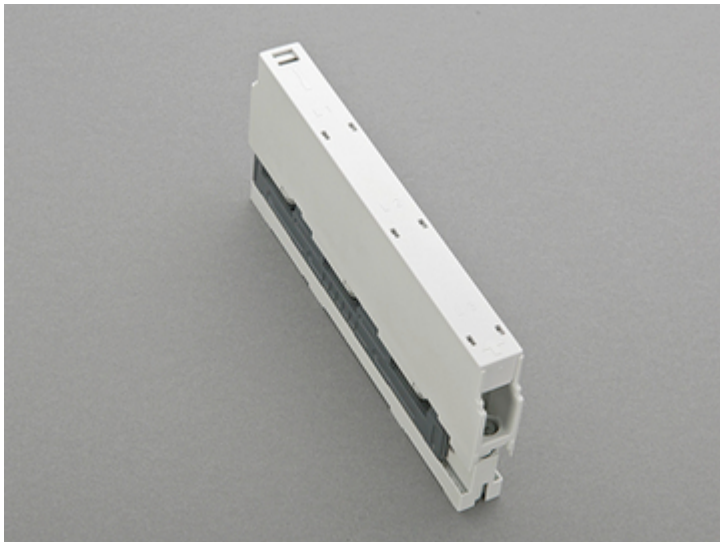


Supporto per barre con morsetti, 3p (01484)



Descrizione

Articolo

Cod.art.: 01484

Supporto per barre con morsetti, 3p
3p, con morsetti integrati 1,5 - 16 mm²
per barre 12, 15, 20, 25, 30 x 5, 10

Montaggio

60Classic

Gruppo di prodotti 06

Sottogruppo merceologico 09

Pz / conf. 10

EAN 4021267014841

Vantaggi prodotto

Connection busbar support with integrated terminals for feeding or tapping the busbar with internal screw holes, can also be used as centre support.

Catalog page 2018 : 3.1, 3.5

eCl@ss 6.1 27400607
27400607

ETIM 4.0 EC001166

ETIM 5.0 EC001166

Certificazioni

Norme

IEC 61439-1:2011

Omologazione CCC : no certification required

Dati prodotto

Valori elettrici

Corrente nominale (IEC): 63 A

Tensione nominale (IEC) AC: 690
V

Power dissipation:

The power dissipation at a typical load of 80% of the rated current results to 0.5 W.

(The power dissipation for operation with rated current would be 0.8 W.)

Utilizzabile fino a max. (IEC): 80 A

Tensione di picco Uimp: 6 kV

Tensione max. IEC AC: 1000
V

Tensione max. IEC DC: 1500
V

Current capacity of the clamping point 80A

short-circuit withstand rating:

surge current strength > 30kA at busbar support separation of 550mm

surge current strength > 50kA at busbar support separation of 250mm

further values in the short-circuit withstand rating diagram

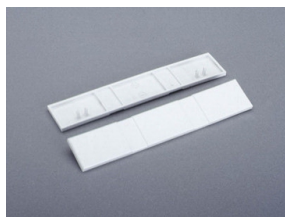
Valori meccanici

L x H x P: 20 x 202 x 87
Peso: 25.6 kg/100
Poli: 3 poli
per barre: 12, 15, 20, 25, 30 x 5, 10

Proprietà materiali

Corpo temperature stability 125°C,
base: self-extinguishing in acc. to UL 94,
creepage resistance CTI 600,
halogen-free
Viti: screw +/- (PZ2), galvanized, chromized
Coperchio: resistenza alle temperature fino a 125°C,
ignifugo secondo UL 94,
tenuta alle correnti di fuga CTI 600

Accessori



01573

Copertura laterale

per supporti barre 01484, 01495, 01500, 01508 e 01603