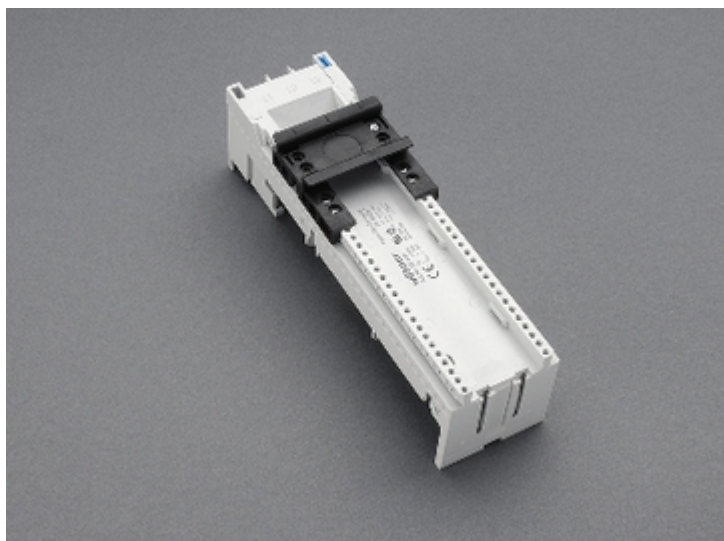


Adattatore EEC 80 A (32466)



Descrizione

Articolo

Cod.art.: 32466

EQUES® 60Classic

Adattatore EEC 80 A

con 1 guida DIN scorrevole

54 x 200, con morsetti 16 mm² accessibili dal retro

per barre 12, 15, 20, 25, 30 x 5, 10 e barre profilate

Montaggio

60Classic

Gruppo di prodotti 05

Sottogruppo merceologico 27

Pz / conf. 4

EAN 4021267324667

Catalog page 2018 : 3.11

eCl@ss 6.1 27370304
27370304
ETIM 4.0 EC001531
ETIM 5.0 EC001531

Certificazioni

Norme

IEC 61439-1:2011

Omologazioni

CSA , UL , Germanischer Lloyd



for UL feeder circuits >250V

Type No.: EEC6080-L

UL file: E123577, UL category (for USA): NMTR <http://www.ul.com>

UL file: E123577, UL category (for Canada): NMTR7 <http://www.ul.com>

CSA file: 110285, CSA class: 3211-37 <http://directories.csa-international.org>

Omologazione CCC : no certification required

Dati prodotto

Valori elettrici

Corrente nominale (IEC): 80 A

Tensione nominale (IEC) AC: 690
V

Rated current (UL): 80 A

Rated voltage (UL) AC: 600
V

Power dissipation:

The power dissipation at a typical load of 80% of the rated current results to 6 W.

(The power dissipation for operation with rated current would be 9.3 W.)

rated isolation voltage U_i: 800
V
Tensione di picco U_{imp}: 6 kV
Tensione max. IEC AC: 800
V
Tensione max. IEC DC: 800
V

short-circuit
withstandbility: the short-circuit capacity of the combination of adapter and motor starter
depends on the motor starter

Valori meccanici

L x H x P: 54 x 200 x 63
Peso: 37.3 kg/100
Poli: 3 poli
per barre: 12, 15, 20, 25, 30 x 5, 10 e barre profilate

Proprietà materiali

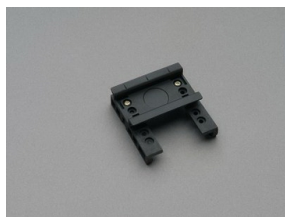
Involucro: temperature stability 125°C,
self-extinguishing in acc. to UL 94,
creepage resistance CTI 600,
halogen-free
Guida: temperature stability 125°C,
DIN: self-extinguishing in acc. to UL 94,
creepage resistance CTI 550,
halogen-free
Viti: screw +/- (PZ1), galvanized, chromized

Conductor insulation: temperature-resistant up to 105 °C

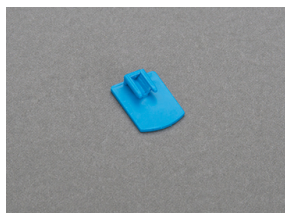
Avvisi e consigli

for feeder circuits as per UL508a, accessory 32974 is required

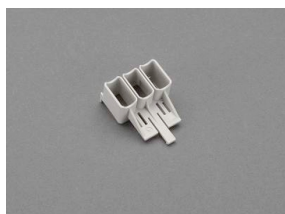
Accessori



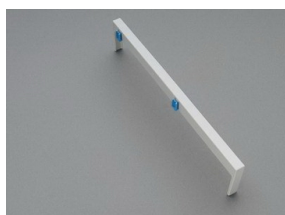
32948
Guida DIN, 54 mm
per adattatori EEC/ EMC



32969
Bloccaggio laterale per guide DIN



32974
Separatore fasi sec. UL
per adattatori 32466, 32467, 32469 e 32472



32963
Modulo laterale per adattatori EEC
per entrambi i lati
9 x 200



32914
Cavo AWG4 (25mm²), lungh. 210 mm



32915
Doppio cavo 2per AWG10 (2per 6mm²), lungh. 130/ 280 mm