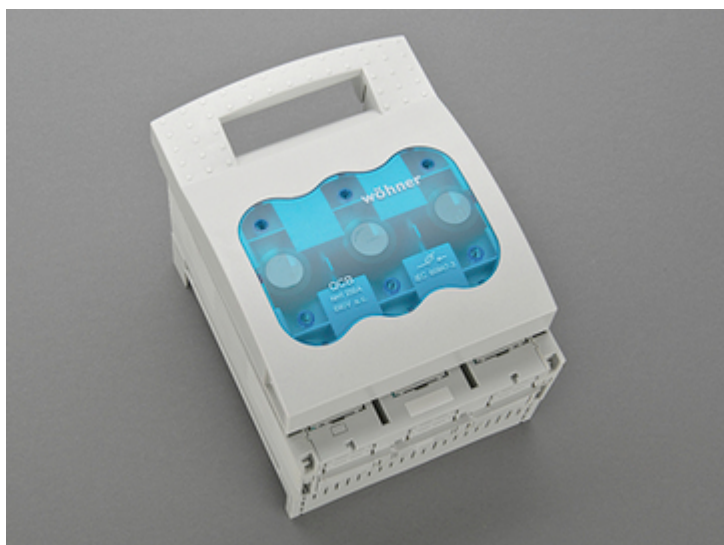


Base sezion. per fus. NH1, 250 A, per barre, uscita in basso/ alto (33601)



## Descrizione

### Articolo

Cod.art.: 33601

QUADRON® 60Classic

Base sezion. per fus. NH1, 250 A, per barre, uscita in basso/ alto vite M10

con tecnologia CrossLink®

per barre 12, 15, 20, 25, 30 x 5, 10 e barre profilate

### Montaggio

60Classic

Gruppo di prodotti 09

Sottogruppo merceologico 27

Pz / conf. 1

EAN 4021267336011

## Vantaggi prodotto

CrossLink® adapter technology

Fast and safe conversion of the connection for top or bottom; the parts under voltage remain shock protected

Simple and safe clicking into place and making contact

Safe connection through shock protection split into two

Busbar supports for flat busbars can be mounted above each other

Self-closing test holes are available in the cover.

**Catalog page** 2018 : 3.23

**eCl@ss 6.1** 27142108

27142108

**ETIM 4.0** EC001040

**ETIM 5.0** EC001040

## Certificazioni

### Norme

IEC 60947-1:2007 + A1:2010 + A2:2014

IEC 60947-3:2008 + A1:2012 + A2:2015

### Omologazioni

IEC (CB) , UL , Germanischer Lloyd , VDE , CCC



for UL feeder circuits >250V

Type No.: QCB-NH1

UL file: E230163, UL category (for USA): IZLT2 <http://www.ul.com>

CCC certificate: 2012010302563561

## Dati prodotto

### Valori elettrici

Corrente nominale (IEC): 250 A

Tensione nominale (IEC) AC: 690 V

Tensione nominale (IEC) DC: 440 V

Rated current (UL): 250 A  
Rated voltage (UL) AC: 600 V

Categoria AC-22B (400V)  
d'impiego AC: AC-23B (400V/160A)  
AC-21B (690V)  
AC-20B (1000V) at pollution degree 2

visible information required if used at more than 690V AC: do not switch under load

Categoria DC specifications: 2 current paths (L1,L3) in series  
d'impiego DC: DC-20B (440 V)  
DC-20B (1000V) at pollution degree 2

visible information required if used at more than 440V DC: do not switch under load

Power dissipation:

The power dissipation at a typical load of 80% of the rated current results to 16.6 W.  
(The power dissipation for operation with rated current would be 26 W.)

rated isolation voltage  $U_i$ : 800  
V

Tensione di picco  $U_{imp}$ : 6 kV

Tensione max. IEC AC: 800  
V

Tensione max. IEC DC: 800  
V

rated peak withstand current  $I_{pk}$ : 13.7 kA

cond. rated short-circuit current with fuses: 80 kA / 690  
V

approved with fuse links of characteristics: gG

Bemessungskurzzeitstromfestigkeit  $I_{CW}$ : 8,1kA / 1s

SCCR: 100 kA

for fuse links IEC 60269-2-1 (I) / DIN VDE 0636-201 size 1 up to 23W power dissipation

Special operating conditions corresponding to IEC / EN 61439-1 may yield to faulty activations of pilot switches and fuse monitors. The operating conditions have to be considered for the analysis of status signals.

Entsprechend den angegebenen AC- und DC- Schalteigenschaften und unter Berücksichtigung der Überlastbedingungen, sind gewisse Abstände zu geerdeten Metallteilen einzuhalten. Nähere Informationen auf Anfrage. Bei Verwendung als Trennschalter ist die Einhaltung der Abstände nicht erforderlich.

Degree of protection IP30 at front, degree of protection near terminal depends on installation

### Valori meccanici

L x H x P: 184 x 243 x 129

Peso: 266 kg/100

Poli: 3 poli

per barre: 12, 15, 20, 25, 30 x 5, 10 e barre profilate

front degree of protection: IP30

### Connessioni

viti M10

### Proprietà materiali

Corpo base:	temperature stability 125°C, self-extinguishing in acc. to UL 94, creepage resistance CTI 600, halogen-free
Protezione contro contatto accidentale:	resistenza alle temperature fino a 125°C, ignifugo secondo UL 94, tenuta alle correnti di fuga CTI 200
Coperchio:	temperature stability 125°C, self-extinguishing in acc. to UL 94, creepage resistance CTI 200, halogen-free
Piastra adattatore:	temperature stability 125°C, self-extinguishing in acc. to UL 94, creepage resistance CTI 600, halogen-free
Contatti:	spring-loaded copper contacts, silver plated
Viti di collegamento:	screw M10, galvanized, chromized

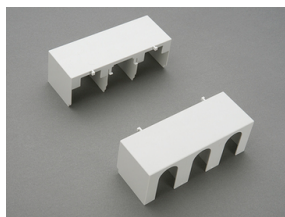
## **Altre versioni**

Variant with box terminals: 33 600

Variant with electronic fuse monitoring: 33 325

Variant with electromechanical fuse monitoring: 33 160

## Accessori



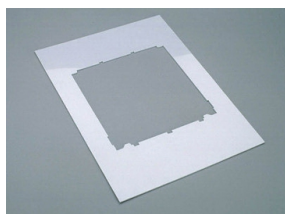
### 33142

Copertura per capicorda, innestabile in alto / basso  
per QCB / QCS-NH 1, QCS 320A  
QCB-NH1, QCS-NH1, QCS 320 A



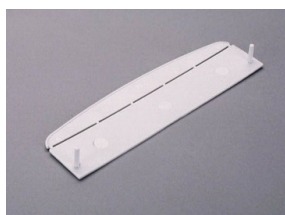
### 33145

Morsetto a prisma, doppio  
2x 35-70 mm<sup>2</sup>  
QCB-NH1, QCS-NH1, QCS 320 A



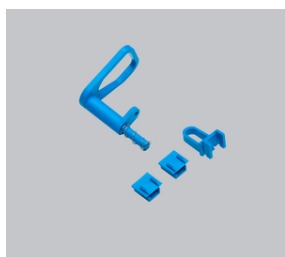
### 33152

Cornice  
215 x 330  
Gr. NH 1



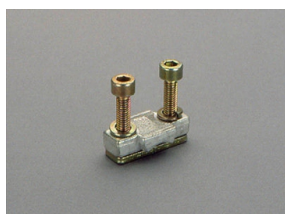
### 33155

Protezione per mani per basi sez. NH, Gr. NH 1- 3  
per la protezione posteriore del coperchio



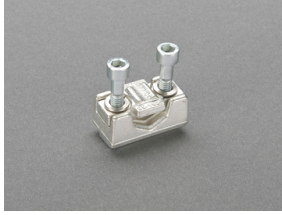
### 33157

Bloccaggio coperchio  
per filo sigillo oppure 3 lucchetti di diametro staffa 4 -7 mm  
Gr. NH 1 - 3



### 33163

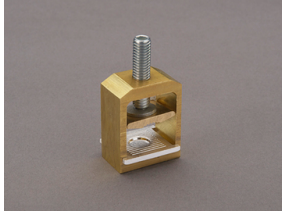
Connessione a brida per cavi Cu  
70 - 150 mm<sup>2</sup>  
QCB-NH1, QCS-NH1, LTS-F 250, LTS 400

**33166**

Morsetto a prisma, per cavi Cu / Al

35 - 150 mm<sup>2</sup>

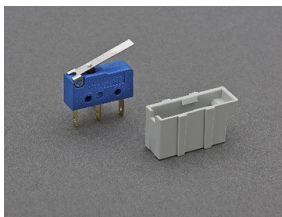
QCB-NH1, QCS-NH1, QCS 320 A

**33909**

Morsetto a gabbia

35 - 150 mm<sup>2</sup>

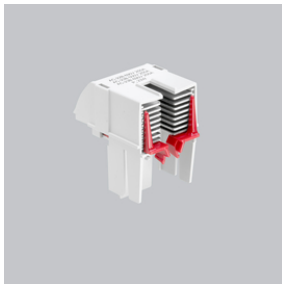
QCB-NH1, QCS-NH1, QCS 320 A

**33917**

Microswitch per segnalazione posizione coperchio

contatto in commutazione 250 V AC / 5 A, 30 V DC / 4 A

Gr. NH 1

**33918**

Camera spegningarco

kit per ottenere categoria di impiego più elevata

per basi sez. NH1