

Base sezion. per fus. NH2, 400 A, per barre, uscita in basso/ alto (33602)



## Descrizione

### Articolo

Cod.art.: 33602

QUADRON® 60Classic

Base sezion. per fus. NH2, 400 A, per barre, uscita in basso/ alto  
vite M10

per barre 12, 20, 30 x 10 e barre profilate

### Montaggio

60Classic

Gruppo di prodotti 09

Sottogruppo merceologico 30

Pz / conf. 1

EAN 4021267336028

## Vantaggi prodotto

Disconnectors are equipped with arc chambers.

The shock protection is split into 2 for safe connection of the conductors.

Self-closing inspection holes are available in the cover.

**Catalog page** 2018 : 3.23

eCl@ss 6.1 27142108  
27142108

ETIM 4.0 EC001040

ETIM 5.0 EC001040

## Certificazioni

### Norme

IEC 60947-1:2007 + A1:2010 + A2:2014

IEC 60947-3:2008 + A1:2012 + A2:2015

### Omologazioni

IEC (CB) , UL , Germanischer Lloyd , KEMA , CCC



for UL feeder circuits >250V

Type No.: LTS-2

UL file: E230163, UL category (for USA): IZLT2 <http://www.ul.com>

CCC certificate: 2004010302117262

## Dati prodotto

### Valori elettrici

Corrente nominale (IEC): 400 A

Tensione nominale (IEC) AC: 690 V

Tensione nominale (IEC) DC: 440 V

Rated current (UL): 400 A

Rated voltage (UL) AC: 600 V

Categoria AC-23B (400V)  
d'impiego AC: AC-22B (690V)  
AC-21B (690V)  
AC-20B (1000V) at pollution degree 2

visible information required if used at more than 690V AC: do not switch under load

Categoria DC specifications: 2 current paths (L1,L3) in series  
d'impiego DC: DC-22B (440 V)  
DC-21B (440 V)  
DC-20B (1000V) at pollution degree 2

visible information required if used at more than 440V DC: do not switch under load

Power dissipation:

The power dissipation at a typical load of 80% of the rated current results to 28.8 W.

(The power dissipation for operation with rated current would be 45 W.)

rated isolation voltage  $U_i$ : 800  
V

Tensione di picco  $U_{imp}$ : 6 kV

Tensione max. IEC AC: 800  
V

Tensione max. IEC DC: 800  
V

rated peak withstand current  $I_{pk}$  : 27.2 kA

cond. rated short-circuit current with fuses: 50 kA / 690V

approved with fuse links of characteristics: gG

Bemessungskurzzeitstromfestigkeit  $I_{CW}$ : 13,2kA / 1s

SCCR: 100 kA

for fuse links IEC 60269-2-1 (I) / DIN VDE 0636-201 size 2 up to 34W power dissipation

Special operating conditions corresponding to IEC / EN 61439-1 may yield to faulty activations of pilot switches and fuse monitors. The operating conditions have to be considered for the analysis of status signals.

Entsprechend den angegebenen AC- und DC- Schalteigenschaften und unter Berücksichtigung der Überlastbedingungen, sind gewisse Abstände zu geerdeten Metallteilen einzuhalten. Nähere Informationen auf Anfrage.

Bei Verwendung als Trennschalter ist die Einhaltung der Abstände nicht erforderlich

Degree of protection IP30 at front, degree of protection near terminal depends on installation

### **Valori meccanici**

L x H x P: 210 x 288 x 145

Peso: 522 kg/100

Poli: 3 poli

per barre: 12, 20, 30 x 10 e barre profilate

front degree of protection: IP30

Type of fastening: patented click mechanism

### **Conessioni**

viti M10 :

C. serr. 30 - 35 Nm

Accessories:

Clamp connection: Cu 120-240mm<sup>2</sup> s(r), f+AE; lam. Cu 21x1-14; 6-8Nm torque

single wedge clamp terminal: Cu, Al\* 50-150/120-240mm<sup>2</sup> s(r), s(s), f, f+AE; 6-8Nm torque

double wedge clamp terminal: Cu 2x 70-120mm<sup>2</sup> s(r), s(s), f+AE; 6-8Nm torque

\*Connections are not maintenance-free if aluminium conductors are used.

## Proprietà materiali

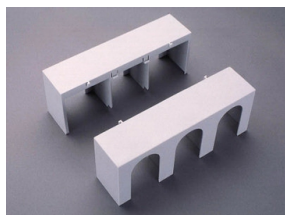
Corpo base:	temperature stability 125°C, self-extinguishing in acc. to UL 94, creepage resistance CTI 200, halogen-free
Protezione contro contatto accidentale:	temperature stability 125°C, self-extinguishing in acc. to UL 94, creepage resistance CTI 600, halogen-free
Coperchio:	temperature stability 125°C, self-extinguishing in acc. to UL 94, creepage resistance CTI 200, halogen-free
Piastra adattatore:	temperature stability 125°C, self-extinguishing in acc. to UL 94, creepage resistance CTI 200, halogen-free
Contatti:	spring-loaded copper contacts, silver plated
Viti di collegamento:	screw M10, galvanized, chromized

## Altre versioni

Variant with electronic fuse monitoring: 33 326

Variant with electromechanical fuse monitoring: 33 161

## Accessori



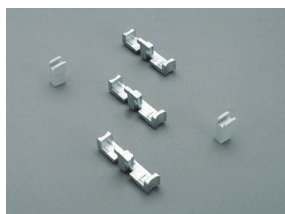
**33143**

Copertura per capicorda, innestabile in alto / basso  
per QCB-NH2



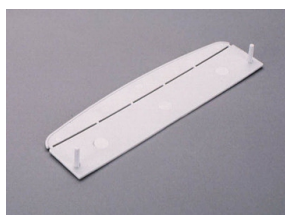
**33146**

Morsetto a prisma, doppio  
2x 70 - 120 mm<sup>2</sup>  
Gr. NH 2



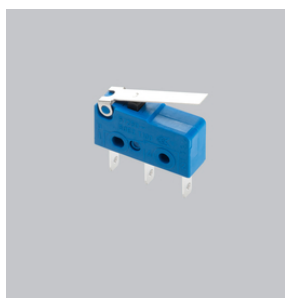
**33148**

Kit di conversione  
per montaggio su barre di spess. 5 mm  
Gr. NH 2



**33155**

Protezione per mani per basi sez. NH, Gr. NH 1- 3  
per la protezione posteriore del coperchio



**33156**

Microswitch per segnal. pos. coperchio  
contatto in commut. 250 V AC / 5 A, 30 V DC / 4 A



**33157**

Bloccaggio coperchio  
per filo sigillo oppure 3 lucchetti di diametro staffa 4 -7 mm  
Gr. NH 1 - 3

**wöhner**

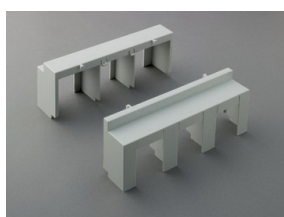
**33164**

Connessione a brida per cavi Cu  
120 - 240 mm<sup>2</sup>  
QCB-NH2, LTS-F 400, LTS 630



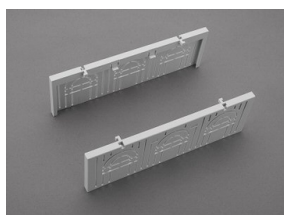
**33167**

Morsetto a prisma, per cavi Cu / Al  
50 - 240 mm<sup>2</sup>



**33316**

Calotta di protezione, 2 pezzi  
per basi sezion. Quadron NH2  
Gr. NH 2



**33418**

Copertura per zona di connessione  
per basi sezionabili di Gr.NH 2