

Base sezion. per fus. NH3, 630 A, per barre, uscita in basso/ alto (33603)



Descrizione

Articolo

Cod.art.: 33603

QUADRON® 60Classic

Base sezion. per fus. NH3, 630 A, per barre, uscita in basso/ alto
vite M12

per barre 12, 20, 30 x 10 e barre profilate

Montaggio

60Classic

Gruppo di prodotti 09

Sottogruppo merceologico 33

Pz / conf. 1

EAN 4021267336035

Vantaggi prodotto

Disconnectors are equipped with arc chambers.

The shock protection is split into 2 for safe connection of the conductors.

Self-closing inspection holes are available in the cover.

Catalog page 2018 : 3.23

eCl@ss 6.1 27142108
27142108

ETIM 4.0 EC001040

ETIM 5.0 EC001040

Certificazioni

Norme

IEC 60947-1:2007 + A1:2010 + A2:2014

IEC 60947-3:2008 + A1:2012 + A2:2015

Omologazioni

IEC (CB) , UL , Germanischer Lloyd , KEMA , CCC



for UL feeder circuits >250V

Type No.: LTS-3

UL file: E230163, UL category (for USA): IZLT2 <http://www.ul.com>

CCC certificate: 2004010302117263

Dati prodotto

Valori elettrici

Corrente nominale (IEC): 630 A

Tensione nominale (IEC) AC: 690 V

Tensione nominale (IEC) DC: 440 V

Rated current (UL): 600 A

Rated voltage (UL) AC: 600 V

Categoria AC-23B (400V)
d'impiego AC: AC-22B (690V)
AC-21B (690V)
AC-20B (1000V) at pollution degree 2

visible information required if used at more than 690V AC: do not switch under load

Categoria DC specifications: 2 current paths (L1,L3) in series
d'impiego DC: DC-22B (440 V)
DC-21B (440 V)
DC-20B (1000V) at pollution degree 2

visible information required if used at more than 440V DC: do not switch under load

Power dissipation:

The power dissipation at a typical load of 80% of the rated current results to 38.4 W.

(The power dissipation for operation with rated current would be 60 W.)

rated isolation voltage U_i : 800
V

Tensione di picco U_{imp} : 6 kV

Tensione max. IEC AC: 800
V

Tensione max. IEC DC: 800
V

rated peak withstand current I_{pk} : 35.2 kA

cond. rated short-circuit current with fuses: 50 kA / 690V

approved wth fuse links of characteristics: gG

Bemessungskurzzeitstromfestigkeit I_{CW} : 15,1kA / 1s

SCCR: 100 kA

fuse links IEC 60269-2-1 (I) / DIN VDE 0636-201 size 3 up to 48W power dissipation

Special operating conditions corresponding to IEC / EN 61439-1 may yield to faulty activations of pilot switches and fuse monitors. The operating conditions have to be considered for the analysis of status signals.

Entsprechend den angegebenen AC- und DC- Schalteigenschaften und unter Berücksichtigung der Überlastbedingungen, sind gewisse Abstände zu geerdeten Metallteilen einzuhalten. Nähere Informationen auf Anfrage.

Bei Verwendung als Trennschalter ist die Einhaltung der Abstände nicht erforderlich.

Degree of protection IP30 at front, degree of protection near terminal depends on installation

Valori meccanici

L x H x P: 256 x 300 x 160

Peso: 756 kg/100

Poli: 3 poli

per barre: 12, 20, 30 x 10 e barre profilate

front degree of protection: IP30

Type of fastening: patented click mechanism

Connessioni

viti M12 :

C. serr. 35 - 40 Nm

Accessories:

Clamp connection: Cu 150-300mm² s(r), f+AE; lam. Cu 25x1-13; 6-8Nm torque

single wedge clamp terminal: Cu, Al* 150-300mm² s(r), s(s), f, f+AE; 6-8 Nm torque

double wedge clamp terminal: Cu 2x 150-185mm² s(r), s(s), f+AE; 6-8Nm torque

*Connections are not maintenance-free if aluminium conductors are used.

Proprietà materiali

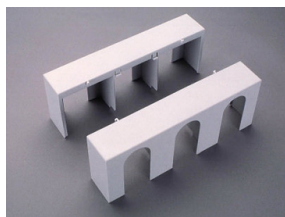
Corpo base:	temperature stability 125°C, self-extinguishing in acc. to UL 94, creepage resistance CTI 200, halogen-free
Protezione contro contatto accidentale:	temperature stability 125°C, self-extinguishing in acc. to UL 94, creepage resistance CTI 600, halogen-free
Coperchio:	temperature stability 125°C, self-extinguishing in acc. to UL 94, creepage resistance CTI 200, halogen-free
Piastra adattatore:	temperature stability 125°C, self-extinguishing in acc. to UL 94, creepage resistance CTI 200, halogen-free
Contatti:	spring-loaded copper contacts, silver plated
Viti di collegamento:	screw M12, galvanized, chromized

Altre versioni

Variant with electronic fuse monitoring: 33 325

Variant with electromechanical fuse monitoring: 33 162

Accessori



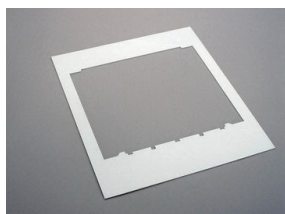
33144

Copertura per capicorda, innestabile in alto / basso
per QCB-NH3



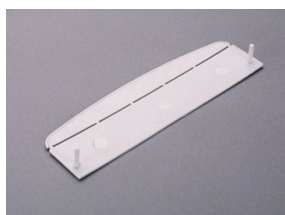
33147

Morsetto a prisma, doppio
2x 150 mm²
Gr. NH 3



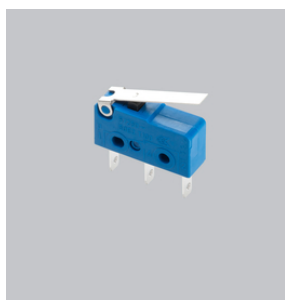
33154

Cornice
290 x 330
Gr. NH 3



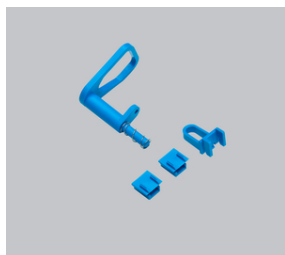
33155

Protezione per mani per basi sez. NH, Gr. NH 1- 3
per la protezione posteriore del coperchio



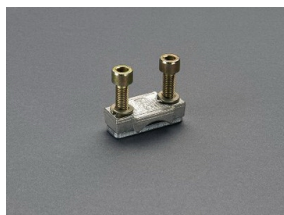
33156

Microswitch per segnal. pos. coperchio
contatto in commut. 250 V AC / 5 A, 30 V DC / 4 A



33157

Bloccaggio coperchio
per filo sigillo oppure 3 lucchetti di diametro staffa 4 -7 mm
Gr. NH 1 - 3

**33165**

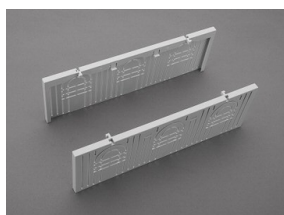
Connessione a brida per cavi Cu
150 - 300 mm²
QCB-NH3, LTS-F 630, LTS 800

**33168**

Morsetto a prisma, per cavi Cu / Al
150 - 300 mm²
Gr. NH 3

**33385**

Morsetto a prisma, doppio
2x 185 mm²
Gr. NH 3

**33419**

Copertura per zona di connessione
per basi sezionabili di Gr.NH 3, max 600 A

**33272**

Estensione del collegamento
Gr. NH 3